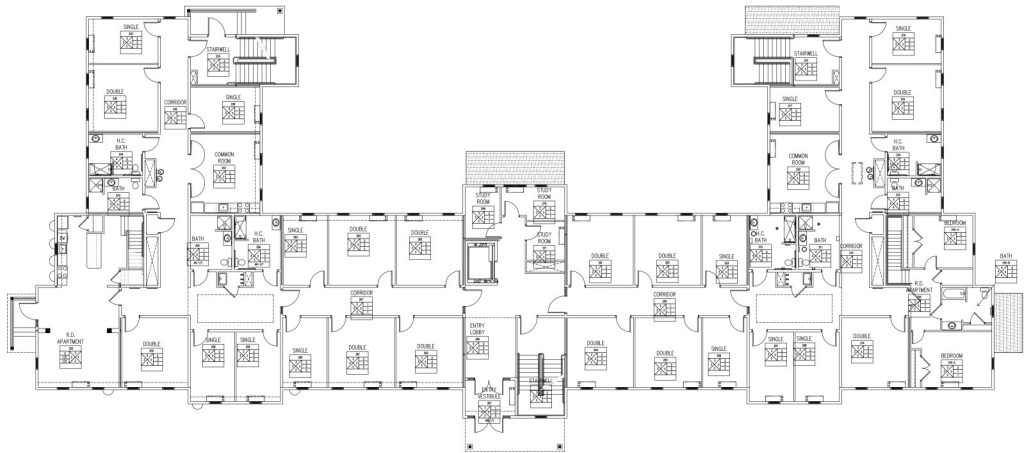


# Simons Rock College Dormitory

Great Barrington, MA



This facility is a Three-story, 21,822sf +/-, light gage steel frame building, approximately 36-feet high. The exterior skin of the building is a cement clapboard siding and pitched roof with architectural asphalt. This facility is a 48-bed dormitory. The lower level has 12 dorm rooms, a laundry room, private individual storage units, lounge with kitchenette, and quiet study rooms. The main floor level is occupied by 24 dorm rooms, a lounge with kitchenette, quiet study rooms and a two story faculty dorm parent apartment at each end of the building. The second floor has 12 dorm rooms, lounge with kitchenette, and quiet study rooms.



- Two private two story faculty dorm parent apartments
- Two lounge with kitchenette on each floor
- Laundry room
- Private individual storage rooms
- Outside gathering space
- Quiet study rooms on each floor
- Energy efficient building material and systems

The Design Studio of



Architects

538 Electric Avenue, Unit #1  
Fitchburg, MA 01420-5370  
(P) 978. 400.7732 (M) 978.604.4064  
www.bthassoc.com