

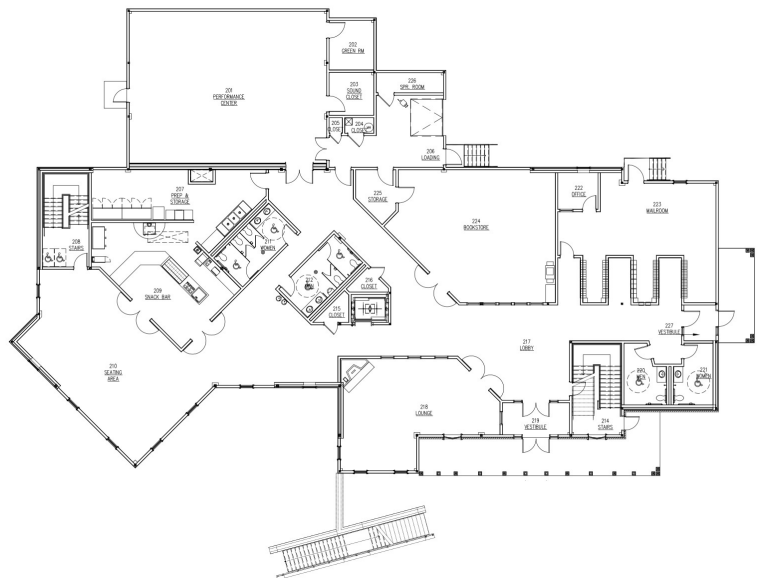
Simons Rock College Student Union

Great Barrington, MA



This facility is a Three-story, 24,684sf +/-, steel frame building, approximately 36-feet high. Light gage metal stud infill, with Exterior Insulation Finishing System (EIFS) and stone veneer at the main entry. This facility is a multi-purpose building with a lower level game room. The main floor level is occupied by a mail room, bookstore, quit lounge, café and performance hall. The second floor has a computer lab, quit study rooms and faculty offices. The facility is designed for an occupant load of 350 people.

- Student activity center
- Cafe
- Performance hall
- Mail Room
- Bookstore
- Study rooms
- Building back-up power system
- Variable Air HVAC system
- Energy efficient building material and systems
- Multi-purpose building



The Design Studio of



538 Electric Avenue, Unit #1
Fitchburg, MA 01420-5370
(P) 978. 400.7732 (M) 978.604.4064
www.bthassoc.com

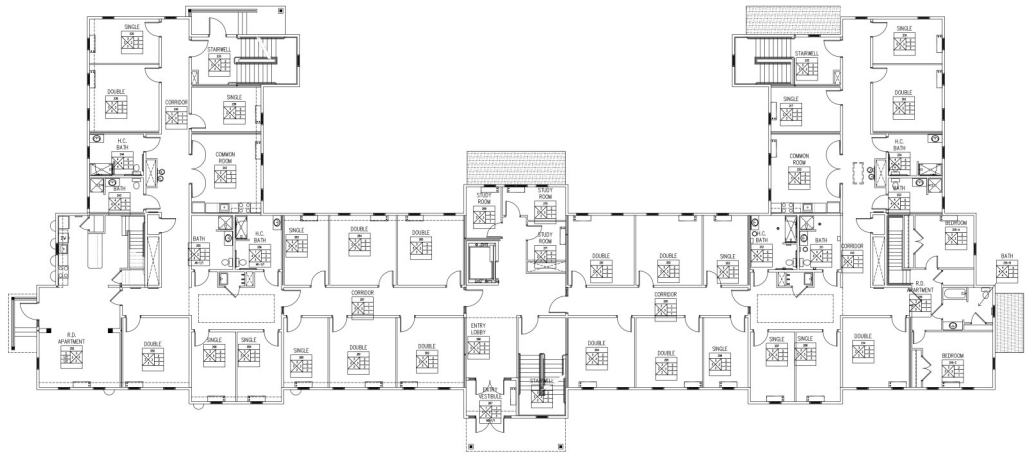
Architects

Simons Rock College Dormitory

Great Barrington, MA



This facility is a Three-story, 21,822sf +/-, light gage steel frame building, approximately 36-feet high. The exterior skin of the building is a cement clapboard siding and pitched roof with architectural asphalt. This facility is a 48-bed dormitory. The lower level has 12 dorm rooms, a laundry room, private individual storage units, lounge with kitchenette, and quiet study rooms. The main floor level is occupied by 24 dorm rooms, a lounge with kitchenette, quiet study rooms and a two story faculty dorm parent apartment at each end of the building. The second floor has 12 dorm rooms, lounge with kitchenette, and quiet study rooms.



- Two private two story faculty dorm parent apartments
- Two lounge with kitchenette on each floor
- Laundry room
- Private individual storage rooms
- Outside gathering space
- Quiet study rooms on each floor
- Energy efficient building material and systems

The Design Studio of



538 Electric Avenue, Unit #1
Fitchburg, MA 01420-5370
(P) 978. 400.7732 (M) 978.604.4064
www.bthassoc.com

Architects

Winchendon School Classroom Connector

Winchendon, MA



This facility is a Single-story, 628sf +/-, structural steel frame and aluminum storefront glass building, approximately 15-feet high. This connector building was designed to reduce the schools energy consumption, as well as provide a gather and study area for the students. While providing a well light, warm and inviting appearance that would not overwhelm the original two classroom buildings.

- A lot of natural light
- Highlight existing building materials
- Gathering and study space
- Energy conservative



The Design Studio of



538 Electric Avenue, Unit #1
Fitchburg, MA 01420-5370
(P) 978. 400.7732 (M) 978.604.4064
www.bthassoc.com

Architects